

# NEWS UPDATE

MARCH 2026



"Service to others is the rent you pay for your room here on earth."

– SWAMI VIVEKANANDA



# Table of Contents:

**04**

## **Introduction**

History of M S International, Inc.  
About Sarva Mangal Family Trust  
Monthly Highlights

**05**

## **Event**

MSIS Social Impact Employee Engagement  
Akshaya Patra Landmark Celebration

**07**

## **NGO Visit**

American India Foundation  
Jivan Jyot Drug Bank  
Sarvamangal Niketan  
Lend a Hand India  
Siddh Divyang Foundation  
Shree Gujarati Mahila Mandal  
Vaani Deaf Children's Foundation  
Project Life  
Shah Happiness Foundation Primary School  
Shree Bidada Sarvodaya Trust  
Bhansali Trust

Akshaya Patra Foundation  
Shree Jain Medical & Education Trust  
Sarvamangal Arogyadham

**23**

**NGO in Focus for March'26**  
Shrimad Rajchandra Mission

**30**

**Success Story**  
Shrimad Rajchandra Mission

# INTRODUCTION

## HISTORY OF M S INTERNATIONAL, INC.

Rika and Manu Shah founded MSI in 1975 in the basement of their home in Ft. Wayne, Indiana. Today, MSI is the America's largest importer and distributor of premium surfaces, offering a vast portfolio of natural stone and tile sourced from 37 countries worldwide, serving residential, commercial, and hospitality markets with high-quality products.

About 30 years ago, they began their philanthropic journey with the Sarva Mangal Family Trust and later founded the Shah Happiness Foundation in 2022. Together, the Shah Family Philanthropies support over 70 million people across 9 countries through 51+ nonprofit partners, serving individuals across diverse communities from prenatal care and maternal health initiatives to compassionate end-of-life support and palliative care services.

Their vision is to drive scalable, sustainable innovation and empower changemakers who challenge the status quo and create long-term social impact. Rika and Manu Shah have received numerous honors, including Ernst & Young's National Entrepreneur of the Year (2007), The Migliore Award (2024), and induction into the Asian Hall of Fame (2025). MSI also proudly supplied the granite for the Vietnam Veterans Memorial in Washington, D.C., reflecting its enduring legacy, global leadership, and lasting impact across generations.

---

## ABOUT SARVA MANGAL FAMILY TRUST

Established in 1994 by the Founders of M S International, Inc. The mission of the Sarva Mangal Family Trust is to improve and strengthen health, education and the illness of communities and help them prepare for global jobs of the 21st century. Sarva Mangal is a Sanskrit word which means Goodness to All.

To advance this mission, the Sarva Mangal Family Trust has donated to and is continuing to work with various organizations and programs in health promotion and prevention, assisting victims of domestic violence, empowering seniors, entrepreneurship, technological literacy, community activism, and children's education.

---

## MONTHLY HIGHLIGHTS



### **VOLUNTEERING FOR CHANGE: EMPLOYEES IN ACTION**

MSIS continues to advance its commitment to creating meaningful impact beyond business through its ongoing social initiatives. A recent employee-led engagement in Bangalore reflects the organization's focus on fostering community development and encouraging collective participation. By bringing employees together for a shared cause, the initiative highlights a strong sense of responsibility toward building positive and inclusive environments.

(Continued on page 5)

## EVENT – MSIS SOCIAL IMPACT EMPLOYEE ENGAGEMENT

**March 2026:** A meaningful step toward community development was undertaken by MSI Services Pvt. Ltd. through a recent employee engagement initiative at the Government Primary School in Sheshadripuram, Bangalore on 7 March 2026. Led by the Social Impact Team, the activity focused on revitalizing the school environment, reflecting a broader commitment to creating positive change beyond business operations. The initiative represents an investment in nurturing better learning spaces, aimed at enhancing the overall educational experience for young students.

Such efforts underscore the belief that even small interventions in educational environments can have a lasting impact on student engagement and well-being.



## EVENT – AKSHAYA PATRA FOUNDATION

**March 2026** – The MSIS Social Impact Team had the honor of attending Akshaya Patra’s landmark celebration held at Rashtrapati Bhavan, marking the achievement of 5 billion meals served and 25 years of impactful service. The event was graced by the Hon’ble President of India and brought together key partners and supporters to celebrate this extraordinary milestone in addressing hunger and supporting education across the nation.

The occasion highlighted the scale and impact of sustained efforts in combating food insecurity and emphasized the importance of collaboration in driving social change. It was an inspiring moment that reinforced a shared commitment towards building a nourished, healthier, and more equitable society.



## NGO VISIT – AMERICAN INDIAN FOUNDATION

**March 2026** – In March, the Social Impact Team visited the SMFT-Funded Training Cum Remote Employment Centre at Ahir College in Rewari on 21 March 2026, along with the Centre of Excellence for Skilling & Sustainable Livelihoods implemented by American India Foundation to understand the implementation of skill development and livelihood-focused initiatives in the region. The centres have been established with the objective of creating sustainable, market-linked employment opportunities for women through structured training and capacity-building programs.

The facilities provide vocational training in areas such as garment construction and other livelihood-oriented skills, equipping participants with practical competencies aligned to local market demand. The training model focuses on hands-on learning, enabling participants to develop technical skills alongside confidence and work readiness. Structured training modules, supported by appropriate infrastructure and equipment, help ensure that participants are prepared for real-world employment scenarios.

In addition to skill development, the centres are designed to function as remote employment hubs, creating opportunities for women to engage in income-generating activities while remaining within their communities. This approach is particularly impactful in enabling participation from women who may face mobility or socio-economic constraints, thereby promoting inclusive workforce participation.

The Centre of Excellence further strengthens this ecosystem by providing a platform for advanced skill development, continuous learning, and linkage to employment opportunities, supporting long-term livelihood sustainability.

By integrating training with market access, the initiative aims to create a pathway from skill acquisition to financial independence.



Training and Remote Employment Centre



MSI Social Impact Team with Beneficiaries



Computer-based Learning for Skill Development



Computer Training Classroom

## NGO VISIT – JIVAN JYOT DRUG BANK

**March 2026** – In March, the Social Impact Team visited Jivan Jyot Drug Bank on 23 March 2026, a long-standing community healthcare initiative based in Mumbai, established in 1984 and led by Manju Ben Vora since 2004. The organization plays a critical role in reducing the financial burden of medicines for underserved populations, particularly those requiring long-term treatment for chronic conditions.

Jivan Jyot Drug Bank currently supports over 6,500 registered patients, with an average daily footfall of more than 100 beneficiaries, including patients from both Gujarat and Maharashtra. The organization is recognized as one of the largest buyers of nephrology-related medicines in Mumbai, enabling it to provide essential medications at highly subsidized rates of up to 80%. In addition to nephrology care, the Drug Bank also supports patients requiring treatment for cancer and liver-related conditions, ensuring continuity of care for critical illnesses.

A key focus of the organization is kidney care, including support for dialysis services. In the Dharavi slum area, Jivan Jyot Drug Bank facilitates free dialysis services through five operational machines, extending life-saving treatment to patients who would otherwise have limited access. The organization has also contributed significantly to strengthening healthcare infrastructure by providing 250 dialysis machines to hospitals in recent years.

In addition to medical support, the organization conducts free cataract surgeries, further improving quality of life for patients. Overall, the visit highlighted Jivan Jyot Drug Bank's comprehensive and compassionate approach to healthcare—combining affordability, accessibility, and sustained support to serve vulnerable communities effectively.



Warehouse of Medicines and Injections



Refrigerator for Kidney Medicines



Social Impact Team with JJDB Team



Pharmacy in Jivan Jyot Drug Bank

## NGO VISIT – LEND A HAND INDIA

**March 2026** – In March, the Social Impact Team visited Ghatle Municipal Primary School in Chembur, Maharashtra on 23 March 2026, to observe the implementation of SMFT-Funded vocational education programs conducted in partnership with Lend A Hand India. The initiative, operational in Mumbai since 2014 and introduced in this school in 2015, integrates skill-based learning into the regular curriculum through a structured, weekly session model.

The program, known as the Multi-Skilled Foundation Course, is designed for students in the 14–16 age group, combining academic learning with practical vocational exposure. The curriculum spans multiple domains, including engineering, agriculture, food processing, and retail, supported by dedicated labs such as engineering labs, food processing labs, and skill-based learning spaces within the school.

Students receive hands-on training in areas such as carpentry, basic engineering techniques and residential and commercial wiring. In agriculture, students are introduced to concepts related to energy, environment, nursery development, and gardening. The food processing module focuses on techniques, hygiene, and nutrition, while the retail component covers billing systems and supply chain fundamentals.

The program is further strengthened through infrastructure support, equipment provision, guest lectures, and structured internships, with students completing approximately 80 hours of internship experience. Currently implemented across 750 schools, the initiative reflects a scalable model for integrating vocational education into mainstream schooling.

The visit highlighted the importance of early skill development in preparing students for future employment and entrepreneurship.



## NGO VISIT – SARVAMANGAL NIKETAN

**March 2026** – In March, the Social Impact Team visited SMFT-Funded Sarvamangal Niketan in Vasai, Maharashtra, on 23 March 2026, a community-based residential facility managed by the Maratha Life Foundation. Established in 2022, the centre follows a holistic model focused on rescue, reunification, and rehabilitation, supporting vulnerable populations including elderly individuals, minors, and orphaned children.

Sarvamangal Niketan currently serves approximately 280 beneficiaries, providing free-of-cost shelter, clothing, and education. The facility is designed to create a safe and supportive environment, with dedicated spaces including open dormitories for men, women, and minors, a mental rehabilitation room, kitchen facilities, and education spaces for children. With a total capacity of 300 residents, the centre continues to expand its outreach and support systems.

Healthcare support is facilitated through tie-ups with hospitals in Dahanu and Vada, where a significant portion of treatments, including surgeries and transportation, is provided at no cost. The facility also operates an in-house OPD clinic, with access to a visiting counsellor and on-call medical professionals, ensuring regular health monitoring and timely intervention.

Nutritional support is strengthened through a partnership with the Annamrita Foundation (formerly ISKCON Food Relief Foundation), with a kitchen capacity to prepare up to 5,000 meals per day. In addition to meeting basic needs, the centre emphasizes rehabilitation through education and structured care.

Overall, the visit highlighted Sarvamangal Niketan’s comprehensive approach to social care—integrating shelter, healthcare, nutrition, and rehabilitation to support vulnerable communities through a structured and compassionate model.



Education Classrooms for Minors



Dormitory Accommodation for Beneficiaries



Kitchen Facility in Sarvamangal Niketan



In-house OPD Clinic in Sarvamangal Niketan

## NGO VISIT – SIDDH DIVYANG FOUNDATION

**March 2026** – In March, the Social Impact Team visited Siddh Divyang Foundation in Pune on 24 March 2026, gaining insights into its technology-enabled healthcare initiatives. The team reviewed the “Vatsalya” application, a digital platform designed to monitor reproductive and child health from the pre-conception stage through pregnancy. The application is widely implemented across sub-centres and Primary Health Centres (PHCs) in Maharashtra, enabling structured tracking, early intervention, and improved maternal and child health outcomes.

Following this, the team visited Patashibai Ratanchandra Manav Kalyan Trust Andhshala, a school and residential facility for visually impaired students. The institution caters to children from 36 districts, currently supporting 19 day-care students and 75 residential students, providing free-of-cost education, accommodation, food, and clothing. The school admits students with a minimum of 40% visual impairment and focuses on creating a supportive and inclusive learning environment.

The school is equipped with facilities that promote both academic and personal development, including computer education, craft activities, music, and a structured curriculum up to the 10th standard. With support from Siddh Divyang Foundation, students have access to specialized learning tools such as laptops, Braille books, talking maps, and assistive study materials including audio-enabled learning devices.

The visit highlighted the integration of technology, education, and accessibility in empowering visually impaired students, while also showcasing the role of digital health solutions in strengthening community healthcare systems.



Computer Lab for Blind Students



Musical Class for Blind Students



Classroom Learning for Primary Students



Audio-enabled Learning Device and Book

## NGO VISIT – KARIGAR – SCHOOL OF APPLIED LEARNING

**March 2026** – In March, the Social Impact Team visited the Karigar – School of Applied Learning in Pune, Maharashtra, on 24 March 2026, an initiative by Lend A Hand India that serves as a dedicated skills hub for multi-sector vocational education. The school is registered under the Maharashtra State Education Board (MSEB) and follows an experiential learning approach aimed at bridging the gap between academic education and practical skill development.

Karigar is built on the philosophy of “learning by doing,” offering hands-on exposure across multiple domains including food processing, electrical repairs, carpentry, gardening, fabrication, information technology, and media-related skills. The initiative is further strengthened through “Skills on Wheels,” a mobile outreach program that provides foundational vocational training to school students, extending the reach of skill education beyond the campus.

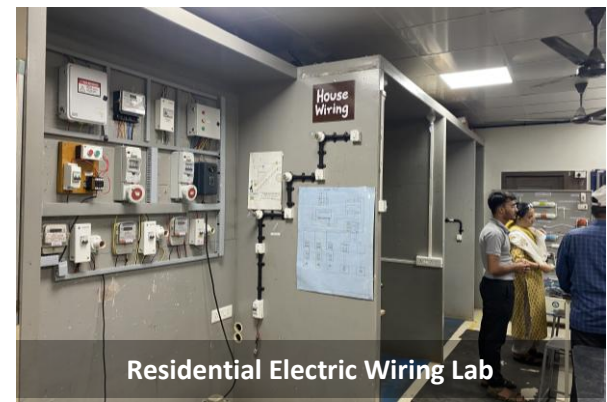
In addition to student training, the centre also functions as a training hub for educators, an incubation space for young entrepreneurs, and an innovation lab, reflecting a comprehensive and scalable model for vocational education. Structured skill labs and real-world learning environments enable students to build confidence, explore career pathways, and develop employable competencies.

The visit also provided an opportunity to understand how vocational education can be effectively integrated within formal schooling systems. The program encourages students to develop problem-solving abilities, practical knowledge, and an entrepreneurial mindset from an early stage.

Overall, the visit highlighted the growing importance of skill-based education in preparing students for evolving career landscapes.



“Skills on Wheels” Mobile Outreach Van



Residential Electric Wiring Lab



Gardening & Agriculture Lab



Food Processing Lab

## NGO VISIT – SHREE GUJARATI MAHILA MANDAL

**March 2026** – In March, the Social Impact Team visited Shree Gujarati Mahila Mandal in Kolkata on 25 March 2026, a well-established social and cultural organization that serves as an important platform for the Gujarati community residing in the city. The Mandal plays a significant role in bringing together Gujarati families and fostering a sense of belonging through community-driven initiatives and cultural engagement.

The organization primarily focuses on women’s empowerment, cultural preservation, and social welfare activities, creating opportunities for women to actively participate in community life. Through various programs, events, and gatherings, the Mandal encourages women to develop leadership skills, build social networks, and contribute to meaningful initiatives that support both individual growth and collective progress.

A key highlight of the organization is its women-led food manufacturing unit, where members are engaged in preparing and selling traditional Indian snacks, along with products such as pickles and spices. This initiative not only preserves culinary traditions but also provides women with opportunities for income generation, skill development, and financial independence, reinforcing the Mandal’s commitment to empowerment through livelihood support.

In addition to its cultural and livelihood initiatives, the Mandal supports a range of social activities aimed at strengthening community bonds and promoting inclusive development. Its role becomes particularly important for families living away from their native regions, offering a cultural anchor and a supportive environment within the city.

The visit provided valuable insights into how such community-based institutions function as grassroots enablers of social cohesion and empowerment.



Women-led Kitchen Unit



Indian Snacks by Shree Gujarati Mahila Mandal



MSI Social Impact Team with Shree Gujarati Mahila Mandal Staff



Kitchen Facility

## NGO VISIT – VAANI DEAF CHILDREN’S FOUNDATION

**March 2026** – In March, the Social Impact Team visited Vaani Deaf Children’s Foundation, an organization dedicated to supporting children with hearing impairment through specialized education and skill development initiatives. The visit provided insights into the foundation’s inclusive approach to learning, focused on enabling children to build strong academic and life skills.

The team observed Vaani’s education intervention programs, which are designed to address learning gaps and support children through structured remedial education. The foundation places a strong emphasis on creating accessible learning environments tailored to the needs of children with hearing impairment, ensuring that they receive quality education and individualized attention.

A key highlight of the visit was the focus on STEM-based learning, where children are introduced to science, technology, engineering, and mathematics through interactive and activity-based methods. These programs aim to enhance problem-solving abilities, logical thinking, and curiosity, preparing students for future academic and career opportunities.

In addition, the foundation provides advanced computer skills training, enabling students to build digital literacy and confidence in using technology. These initiatives play a critical role in bridging the accessibility gap and equipping children with relevant skills for an increasingly digital world.

Overall, the visit highlighted Vaani’s commitment to inclusive education and its role in empowering children with hearing impairment through structured learning, technology integration, and skill-based development. The engagement also underscored the importance of early intervention and continuous support in enabling children to achieve academic and personal growth.



## NGO VISIT – PROJECT LIFE

**March 2026** – In March, the Social Impact Team visited multiple initiatives under Project Life in the Saurashtra region, including the Life Greenfield Centre in Rajkot, the Life Women Empowerment Centre in Junagadh, and the Life Blood Centre in Rajkot, to understand their integrated approach toward environmental sustainability, healthcare, and livelihood development.

At the Life Greenfield Centre, the team observed large-scale plantation and nurturing efforts spread across a 2-acre facility, where over 70 varieties of plants are cultivated and distributed across the region. The centre’s structured approach to long-term plant nurturing and community outreach contributes significantly to increasing green cover and promoting environmental awareness.

The visit to the Life Women Empowerment Centre in Junagadh highlighted structured skill development programs designed to promote financial independence among women. Through training in stitching, embroidery, and beauty services, along with market linkage support and post-training assistance, the centre enables women to build sustainable livelihoods and pursue entrepreneurial opportunities.

The team also visited the Life Blood Centre in Rajkot, a NABH-accredited facility that plays a critical role in providing safe and reliable blood services across the Saurashtra region. With advanced infrastructure, strong hospital partnerships, and large-scale outreach, the centre supports life-saving interventions and preventive initiatives, including thalassemia care and screening programs.

Overall, the visits highlighted Project Life’s comprehensive and integrated approach—addressing environmental sustainability, healthcare, and livelihood generation.



Life Blood Centre



Life Greenfield Centre



SMFT-Funded Blood Processing Machine



Sewing Training Session

## NGO VISIT – SHAH HAPPINESS FOUNDATION PRIMARY SCHOOL

**March 2026** – In March, the Social Impact Team visited the Shah Happiness Foundation Primary Schools in Nichi Mandal and Ghuntu villages in Morbi, along with the Life Vertical Farming initiative at Navnat UK Primary School, Jabalpur on 27 March 2026, to review education and sustainability-focused interventions implemented at the grassroots level.

Both the Nichi Mandal and Ghuntu schools serve students from Balvatika to Grade 8 and provide structured learning environments aimed at strengthening foundational education in rural communities. The campuses are designed to support holistic development, with a focus on creating accessible, organized, and engaging learning spaces. Ongoing efforts to integrate digital learning tools and infrastructure development reflect a commitment to enhancing academic quality and preparing students for future opportunities.

Complementing the education initiatives, the Life Vertical Farming project demonstrates an innovative approach to integrating sustainability within the school ecosystem. Spread across approximately 1,000 sq. ft., the initiative cultivates a variety of vegetables such as cabbage, broccoli, methi, coriander, beetroot, and spinach using pesticide-free methods. The produce is utilized in the school’s mid-day meal program, promoting both nutrition and environmental awareness.

A key highlight of the initiative is active student participation, with dedicated time for maintaining the garden. This hands-on engagement enables students to develop practical knowledge, environmental responsibility, and an understanding of sustainable practices.

Overall, the visit highlighted a holistic approach that combines education, nutrition, and sustainability—creating meaningful and scalable impact while fostering well-rounded development among students.



SHF Primary School, Nichi Mandal



SHF Primary School, Ghuntu



SHF Life Vertical Gardening Initiative



Young Minds Nurturing Vertical Farming

## NGO VISIT – SHREE BIDADA SARVODAYA TRUST

**March 2026** – In March, the Social Impact Team visited Shree Bidada Sarvodaya Trust in Bidada on 28 March 2026, a well-established healthcare institution with a long-standing commitment to community service. Founded in 1972, the trust has steadily expanded its services over the years to become a comprehensive multi-specialty healthcare facility serving rural and underserved populations.

Spread across a 22-acre campus, the trust operates a multi-specialty hospital offering services in eye care, dental care, Gynaecology, and general medicine. The hospital manages a high volume of patients through its outpatient and surgical services, supported by a strong team of medical professionals and visiting consultants. In addition to routine services, the institution regularly conducts medical outreach camps across various specialties, extending healthcare access to surrounding communities.

The visit also included the Jaya Rehabilitation Institute and Research Centre, which provides specialized rehabilitation services, including therapies for cardiopulmonary conditions, cerebral palsy, and autism. The centre is equipped with advanced therapy facilities and supports both human and animal prosthetic development, reflecting a unique and inclusive approach to rehabilitation.

Further strengthening its healthcare ecosystem, the trust houses the SMFT-funded CT scan Imaging Centre, enhancing diagnostic capabilities within the hospital. The team also reviewed the progress of the Upcoming SMFT Funded Shah Happiness Robotics Rehabilitation Centre, an advanced facility under development. Once completed, the centre will be equipped with cutting-edge robotics-based rehabilitation systems, significantly enhancing treatment and recovery support for patients.



Pediatrics Rehabilitation Room



Eye Check-up in Bidada Hospital



Upcoming Shah Happiness Robotic Rehabilitation Centre



Cardio-Pulmonary Rehabilitation

## NGO VISIT – BHANSALI TRUST

**March 2026** – In March, the Social Impact Team visited the SMFT-Funded Sarvamangal Mushar Expansion Project on 27 March 2026 in Gaya, Bihar, implemented by the Bhansali Trust, to understand its large-scale community development model focused on uplifting one of the most underserved populations. The project aims to expand its integrated development approach across 4,000 villages, with a focus on improving overall human development indicators.

Currently, the initiative has already reached approximately 300,000 individuals across 1,000 villages, reflecting its significant scale and outreach. The project follows a holistic approach, combining education, healthcare, and community empowerment to drive long-term social transformation.

A key component of the initiative is the SarvaMangal Vidyalaya, which provides free primary education from Grade 1 to 4 to children who have never previously attended school. The school plays a crucial role in bringing first-generation learners into the formal education system and building a foundation for continued learning.

The project also emphasizes community empowerment through the formation of Self-Help Groups (SHGs), with a total of 2,823 members actively engaged. These groups support livelihood development, financial inclusion, and collective participation within the community.

In addition, the initiative has contributed significantly to improving healthcare access, with over 216,000 patients supported through its interventions. The integration of education, health, and livelihood support reflects a comprehensive model aimed at long-term community upliftment.

Overall, the visit highlighted the project's scalable and integrated approach to development, demonstrating how structured interventions across multiple sectors can contribute to sustainable and inclusive progress in underserved regions.



Manav Rahat Beneficiaries



Training Session for Para Medical Workers



Meeting with Self Help Groups (SHG)



Sarvamangal Vidyalaya

## NGO VISIT – BHANSALI TRUST

**March 2026** – In March, the Social Impact Team visited an Eye Camp in Gaya, Bihar, organized by Bhansali Trust on 28 March 2026, as part of ongoing efforts to strengthen access to eye care services in underserved communities. The camp was designed to address both preventive and curative aspects of eye health, focusing on early detection and timely treatment of vision-related conditions.

The initiative provided a comprehensive range of services including eye screening, cataract surgeries, and treatment for various eye conditions, enabling beneficiaries to receive essential care within their local communities. By bringing specialized healthcare services closer to remote populations, the camp helped reduce barriers related to distance, accessibility, and awareness.

Such outreach-based camps play a crucial role in identifying uncorrected vision issues at an early stage and ensuring appropriate medical intervention. Cataract surgeries conducted through these initiatives contribute significantly to restoring vision and improving the quality of life for individuals affected by avoidable blindness.

The visit also highlighted the importance of continuous awareness and community engagement in encouraging participation and promoting preventive eye care practices. By combining screening, treatment, and follow-up support, the initiative reflects a structured approach toward improving long-term eye health outcomes.

Overall, the engagement reinforced the effectiveness of community-driven healthcare models in delivering accessible and impactful services. Through sustained outreach and targeted interventions, such initiatives continue to contribute toward reducing vision impairment and enhancing the well-being of underserved populations.



## NGO VISIT – AKSHAYA PATRA FOUNDATION

**March 2026** – In March, the Social Impact Team visited the SMFT-Funded Akshaya Patra Kitchen in Bhuj on 30 March 2026, a large-scale centralized kitchen dedicated to providing nutritious mid-day meals to school children across the region. Established in 2019, the facility operates from a 4-acre campus and serves as a critical hub for food preparation and distribution, supporting school nutrition programs at scale.

The kitchen currently caters to approximately 26,000 beneficiaries across 191 schools daily, ensuring consistent access to freshly prepared meals for students. The operations follow a highly structured schedule, with food preparation beginning at 5:00 am and dispatch completed by 11:00 am, enabling timely delivery across a coverage radius of up to 45 km. The system is supported by a dedicated workforce of around 140 staff members and a fleet of 28 delivery vehicles, ensuring efficient coordination and logistics.

The facility is equipped with advanced, high-capacity cooking infrastructure designed for large-scale production. Automated roti-making units, capable of producing thousands of rotis per hour, along with steam-based bulk cooking systems, enable the preparation of substantial quantities of dal, rotis, and snacks while maintaining hygiene, consistency, and quality standards. This efficient production model ensures that meals are prepared in a timely and standardized manner to meet the daily demand.

In addition to supporting government school programs, the initiative is further strengthened through SMFT-supported meal distribution, extending nutritious food access to additional students in private schools. This integrated approach enhances the reach of the program and contributes to improved nutrition outcomes across different segments of students.



## NGO VISIT – SHREE JAIN MEDICAL & EDUCATION TRUST

**March 2026** – In March, the Social Impact Team visited Matruchhaya English Medium School and Shree Matruchhaya Kanya Shala in Bhuj on 30 March 2026, both institutions run by the Shree Jain Medical and Education Trust, to understand their educational models and infrastructure supporting students across different age groups.

Matruchhaya English Medium School, established in 2025, is currently operating at the pre-primary level with structured sections for young learners aged 3 to 6 years. The school follows a well-organized learning approach supported by a dedicated team of teachers and is set to expand further with the introduction of Grade 1 from June 2026. Despite operating from a temporary setup, the institution demonstrates a focused effort toward creating a strong foundational learning environment for early childhood education.

The team also visited Shree Matruchhaya Kanya Shala, a long-established institution founded in 1973, serving approximately 3,300 students from pre-primary to higher secondary levels. The school is supported by a robust infrastructure, including 70 classrooms, multiple computer laboratories, and smart board-enabled classrooms for higher grades, enabling a blend of traditional and technology-enabled learning.

The institution follows a structured academic model, with co-educational learning at the primary level and a dedicated focus on girls' education at the higher secondary stage, offering streams in arts, commerce, and science. The scale and organization of the school reflect its long-standing role in providing accessible and quality education to the community.

Overall, the visit highlighted the importance of both emerging and established educational institutions in strengthening foundational learning and academic progression.



Computer Lab for Primary Students



Dhingli Ghar in Matrushree Kanya Shala



Matrushree English School



Science Lab for Higher Secondary Students

## NGO VISIT – SARVAMANGAL AROGYADHAM

**March 2026** – In March, the Social Impact Team visited SMFT- Funded Sarvamangal Arogyadham in Bhuj on 30 March 2026, a holistic healthcare centre established in 2005, dedicated to promoting preventive healthcare and overall well-being through traditional and integrative healing systems. The centre offers a wide range of services including naturopathy, Ayurveda, Panchakarma, yoga, physiotherapy, and fitness-based therapies, providing a comprehensive approach to health and recovery.

The facility caters to approximately 25 outpatient (OPD) patients daily, with physiotherapy services supporting around 15 patients per day. The integration of physiotherapy has strengthened the centre's rehabilitation capabilities, enabling structured treatment for a variety of conditions related to mobility, recovery, and lifestyle health.

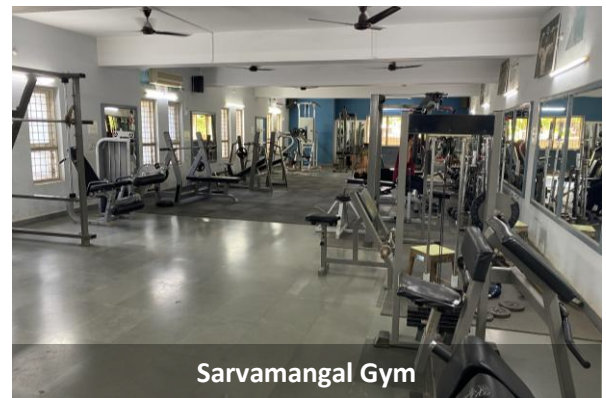
Sarvamangal Arogyadham is equipped with 11 patient rooms, along with dedicated treatment areas for different therapies, ensuring organized and efficient service delivery. The centre also has SMFT- Funded 22 functional oxygen concentrators, supporting patients requiring additional medical care. Separate spaces for naturopathy, Panchakarma, physiotherapy, and wellness activities contribute to a well-structured and patient-friendly environment.

In addition to treatment services, the centre actively promotes wellness through regular yoga sessions, with around 19 participants engaged in ongoing practice. Fitness facilities further support individuals in adopting healthier lifestyles and preventive care routines.

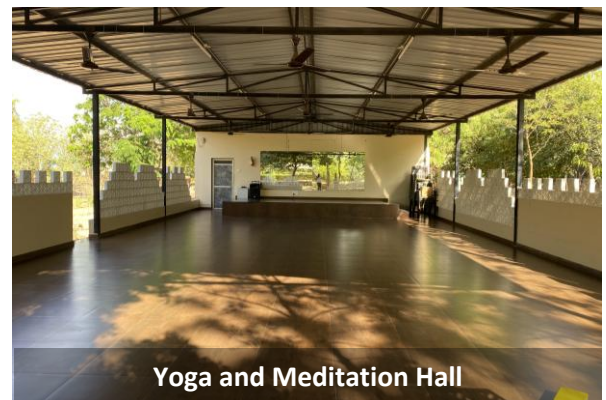
Overall, the visit highlighted the centre's integrated approach to healthcare—combining traditional healing practices with modern therapeutic support. Through its focus on prevention, rehabilitation, and holistic well-being, Sarvamangal Arogyadham continues to contribute meaningfully to improving health outcomes and quality of life for the community.



Ayurvedic Healing Treatment Room



Sarvamangal Gym



Yoga and Meditation Hall



Physiotherapy Department

### *About the Nonprofit*

Shrimad Rajchandra Love and Care (SRLC) is the humanitarian arm of Shrimad Rajchandra Mission Dharampur, dedicated to serving underserved communities through compassion-driven initiatives. The organisation works across healthcare, education, women's empowerment, and rural development, focusing on delivering inclusive and sustainable impact across vulnerable populations.

At the core of its efforts is a 250-bedded charitable multi-specialty hospital in South Gujarat, supported by outreach programs that extend services to remote and tribal regions. Addressing key public health challenges such as vision impairment, anemia, maternal and child health, and primary care access, SRLC ensures timely intervention through integrated screening, awareness, and treatment initiatives, reaching over 600,000 beneficiaries annually while strengthening community health outcomes.



### *About the SMFT Funded Project*

SMFT supports a range of initiatives implemented by SRLC, focused on strengthening healthcare access and community development in underserved regions.

The Vision Care Project and Anemia Mitigation Project address key public health challenges through large-scale screening, early detection, and preventive care.





In addition, the Shrimad Rajchandra Sarvamangal Centre of Excellence for Women promotes skill development and livelihood generation, supporting over 900 tribal women. The Shah Happiness Urgent Care Centres in Dharampur and Surendranagar provide accessible primary healthcare, managing common conditions such as diabetes, hypertension, and general ailments.

The Shrimad Rajchandra Sarvamangal Hospital in Surendranagar, a 600-bed multi-specialty facility, further strengthens regional healthcare infrastructure through comprehensive and compassionate care.

Upcoming initiatives, including the Shrimad Rajchandra Sarvamangal University and Shrimad Rajchandra Animal Hospital, aim to expand access to education and extend care services, reinforcing SMFT's commitment to holistic and sustainable community development.

### *Project Location/Geography*

The Vision Care Project is implemented across 155 districts in 16 states, including Gujarat, Maharashtra, Uttar Pradesh, and Assam, reflecting its wide national footprint.

The Anemia Mitigation Project is currently focused on rural and tribal regions of South Gujarat and is progressively expanding to multiple states such as Maharashtra, Karnataka, Rajasthan, Odisha, and West Bengal, with a strong emphasis on reaching underserved and remote communities.

### Recent Project Updates

SRLC continues to strengthen its large-scale healthcare initiatives through expanded outreach and improved operational systems. The Vision Care Project has completed over 6.6 million eye screenings and distributed nearly 1 million spectacles, while the Anemia Mitigation Project is progressing steadily toward national scale with over 5 million cumulative screenings underway.

To support this growth, SRLC has enhanced operational efficiency through the implementation of standardized protocols across partner locations, covering onboarding, training, screening, and reporting processes.

These systems ensure consistency, quality delivery, and structured program execution at scale.

Further strengthening its digital capabilities, SRLC has integrated Google AppSheet-based data systems, enabling real-time monitoring of activities conducted in schools and villages. This has improved data accuracy, transparency, and decision-making.

Looking ahead, SRLC plans to introduce a dedicated mobile application for partners in 2026 to streamline operations, including inventory management and activity scheduling—marking a transition toward more scalable, technology-enabled program delivery.



### *Overall Impact*

Overall, SRLC's initiatives are driving significant improvements in public health outcomes by addressing two critical yet often overlooked challenges—vision impairment and anemia. Corrective interventions have enabled individuals, particularly school children, to see clearly, engage actively in classrooms, and improve their academic performance.

In parallel, anemia reduction efforts have resulted in an average 50% improvement in hemoglobin levels among beneficiaries, leading to reduced fatigue, increased physical activity, enhanced cognitive performance, and lower absenteeism in schools.

With ambitious targets of 6 million eye screenings and 6 million hemoglobin screenings in 2026, SRLC continues to scale its impact—advancing measurable improvements in health, education, and overall quality of life for underserved populations across India.



### *Highlight of the Month*



The program achieved its highest-ever monthly performance, with approximately 400,000 vision screenings and over 700,000 hemoglobin screenings conducted.

This milestone reflects the program's growing scale and operational efficiency in delivering large-scale health interventions.

The introduction of enhanced digital tracking tools has strengthened real-time monitoring and improved data-driven decision-making.

Increased participation in school-based screenings further highlights growing community trust and acceptance of the program.

### Awards

SRLC was recognized at the Tata Mumbai Marathon, highlighting its strong community engagement and growing impact.

The Shrimad Rajchandra Hospital & Research Centre also achieved Platinum Certification under the NABH Digital Program (2024), reflecting its commitment to advanced digital systems and high-quality patient care.



In the News

Edition  IN English Weather 

**THE TIMES OF INDIA**

City **Surat** Mumbai Delhi Bengaluru Hyderabad Kolkata Chennai Crime News Agra Agartala Ahmedaba

Weather Gujarat Elections

News / City News / Surat News / Rajnath Singh Inaugurates Women's Centre Of Excellence I...

**Trending** Karnataka Doctor Suicide IAS Rohini Sindhuri Scam Hyderabad Techie Suicide Raghav Chadha Arv

 This story is from December 28, 2025

## Rajnath Singh inaugurates women's centre of excellence in Dharampur

Dec 28, 2025, 03:40 IST Comments Share Print AA



Surat: The Shrimad Rajchandra Sarvamangal Centre of Excellence for Women (COEW) was inaugurated by defence minister [Rajnath Singh](#) on Saturday in Dharampur. Envisioned by Pujya Gurudevshri Rakeshji, the first-of-its-kind integrated women's empowerment ecosystem is spread across 11 acres with a built-up area of nearly 2 lakh sq feet.

The centre is among India's largest integrated initiatives dedicated to women's empowerment and is designed to support rural women at every stage of their development. The project reflects the country's commitment to women-led rural development and aims to train and skill more than 15,000 women annually, with thousands more expected to benefit through satellite centres and partnerships across rural India.

The campus is expected to have a transformative impact across the region, which has a population of around 9.6 lakh women, of whom nearly 55% belong to tribal communities.

Home > Sports > Shrimad Rajchandra Love & Care Raises ₹12.5 Crore At Tata Mumbai Marathon 2026, Retains Top Fundraising NGO Title

## Shrimad Rajchandra Love & Care Raises ₹12.5 Crore At Tata Mumbai Marathon 2026, Retains Top Fundraising NGO Title

Shrimad Rajchandra Love and Care (SRLC) raised over ₹12.5 crore at the Tata Mumbai Marathon 2026, marking 14 consecutive years as the highest fundraising NGO. With 2,000+ volunteers, SRLC supported women's empowerment and rural healthcare initiatives. Six Change Legends each raised over ₹1 crore, showcasing the NGO's strong multi-generational philanthropic impact.

FPJ News Service | Updated: Sunday, January 18, 2026, 01:57 PM IST



ADVERTISEMENT

### RECENT STORIES

Hockey India Announces 24-Member Indian Women's Squad For Argentina Tour



Are Smriti Mandhana &

Edition IN

English

Weather

## THE TIMES OF INDIA

City **Mumbai** Mumbai Region Delhi Bengaluru Hyderabad Kolkata Chennai Crime News Agra Agartala Ahme

Mumbai Mirror Maharashtra Elections Photos Weather

News / City News / Mumbai News / Mumbai To Host Sixth Edition Of Global Youth Festival In D...

Trending **Karnataka Doctor Suicide** IAS Rohini Sindhuri Scam Hyderabad Techie Suicide Raghav Chadha Arv < >

This story is from November 28, 2025

## Mumbai to host sixth edition of Global Youth Festival in December, chief minister Devendra Fadnavis to inaugurate event

Hemali Chhappia / Nov 28, 2025, 22:12 IST

Comments Share Print AA



Mumbai: Mumbai will host the Global Youth Festival (GYF) on December 6 and 7. Organised by Shrimad Rajchandra Mission, Dharampur, the festival is expected to have over 15,000 attendees, 60 curated experiences, and six thematic arenas centred on wellbeing, skill-building, arts and culture, social impact, and youth leadership.

Now in its sixth edition, GYF was previously held in

## SUCCESS STORIES – SHRIMAD RAJCHANDRA LOVE AND CARE



Name: Kusum & Vidhyacharan Sharma  
Location: Chainpura, Rajasthan  
Project: Anemia Mitigation

The Sharma family faced significant health challenges as both Kusum Sharma (32) and her husband Vidhyacharan Sharma (34) were affected by anemia, impacting their daily lives and overall well-being. Kusum experienced severe fatigue, weakness, and muscle cramps, making even routine household tasks difficult, while Vidhyacharan's low energy levels affected his ability to work effectively and support the family.



Through a community-based intervention supported by Sarva Mangal Family Trust (SMFT) and implemented in Rajasthan, the family received timely screening, nutritional counselling, and Iron and Folic Acid (IFA) supplementation. Kusum was further guided to seek medical care at a Community Health Centre, while both individuals were supported through regular follow-ups and continuous engagement by field teams.

The results were significant. Kusum's hemoglobin levels improved from 6.5 g/dL to 10.5 g/dL, and Vidhyacharan's levels increased from 8.5 g/dL to 11.4 g/dL. Both reported improved energy levels, reduced fatigue, and overall better health.

Today, Kusum is able to manage her household responsibilities with ease, and Vidhyacharan has regained strength and productivity in his work.



## SUCCESS STORIES – SHRIMAD RAJCHANDRA LOVE AND CARE



Name: Divya Meghwal

Location: Morwan Village, M.P

Project: Vision Care

Divya Meghwal, a 15-year-old student of Class 10-B, comes from a modest family where her father works in a cement factory. With limited access to healthcare, Divya had never undergone an eye check-up and often struggled with blurred vision, making it difficult for her to study and keep up with her academic work.

Through the **Vision Care Project**, Divya was screened at a free eye camp organised at CM Rise School, Javad. The examination identified a vision-related issue, which was affecting her ability to read and learn effectively. With timely intervention and support from the **Sarvamangal Family Trust**, she was provided with appropriate spectacles.

The impact was immediate and transformative. With improved vision, Divya is now able to see clearly and focus on her studies without difficulty. Her confidence has grown, and she is better equipped to continue her education.

“Now I don’t face any difficulty in studying. I can see clearly and am able to study well.” – Divya Meghwal



Follow us on



Know more at

[www.sarvamangalfamilytrust.org/](http://www.sarvamangalfamilytrust.org/)

[www.msisurfaces.com/corporate/charitable-trust.aspx](http://www.msisurfaces.com/corporate/charitable-trust.aspx)

